



Planning Act 2008  
Infrastructure Planning  
(Applications Prescribed  
Forms and Procedure)  
Regulations 2009

APFP Regulation 5(2)(q)

## North Lincolnshire Green Energy Park

Volume 7

7.2.7 Appendix C-2: Draft SoCC and  
covering email

PINS reference: EN010116

May 2022

Revision number: 1



---

# THE NORTH LINCOLNSHIRE GREEN ENERGY PARK DEVELOPMENT CONSENT ORDER

Appendix C-2: Draft SoCC and covering email

**Date: May 2022**

**PINS REFERENCE: EN010116**

**APPLICATION DOCUMENT REFERENCE: 7.2.7**

**AUTHOR: SEC NEWGATE UK**

---

## CONTENTS

C-2.1 DRAFT SOCC .....	1
C-2.2 COVERING EMAIL .....	16

## C-2.1 Draft SoCC



### Introduction

North Lincolnshire Green Energy Park Ltd is inviting feedback from the local community on its proposals for the North Lincolnshire Green Energy Park (NLGEP) as part of a public consultation from START DATE TBC to END DATE TBC.

### What is this document?

This document, known as a Statement of Community Consultation (SoCC), sets out how we plan to consult with the local community. It includes:

- The proposed development and developer information
- The planning process
- Our approach to community consultation
- What we will be consulting on
- Who we will be consulting
- How we will consult the local community
- How we will publicise the consultation
- The consultation arrangements
- What we will do with feedback from the consultation

### Why are we publishing this document?

We have published this document in line with the requirements of section 47 of the Planning Act 2008 to help people understand how we will seek their views on the project. We very much want feedback from the local community on our proposals and this document sets out all of the different ways you can find out more and respond.

## The Applicant

### About us

The proposed North Lincolnshire Green Energy Park is being promoted by Solar 21. North Lincolnshire Green Energy Park Ltd is a company set up by Solar 21 for the purposes of promoting the proposed North Lincolnshire Green Energy Park.

Solar 21 sources, develops, and manages renewable energy projects across a range of technologies including solar, biomass, biogas and energy recovery facilities. Locally, Solar 21 has brought forward:

- a 23-megawatt biomass plant that will divert up to 150,000 tonnes per annum of waste wood that would otherwise go to landfill at Tansterne, near Hull.
- a 2-megawatt biogas plant which will process up to 80,000 tonnes of potato pulp and vegetable waste each year at Plaxton, near Hull.
- a new 26-megawatt Energy Recovery Facility, located at Melton, near Hull, with planning consent to turn 250,000 tonnes of refuse derived fuel, that would normally go to landfill or export, into useable energy.
- another biogas plant co-located on the same site.

These projects help to deliver the UK Government's Clean Energy Strategy, which aims to boost renewable energy technology usage in the UK. In the East Midlands and the East Riding of Yorkshire alone, Solar 21 has invested £260m, creating 150 local jobs.

You can find out more information about Solar 21 at our website:

██████████

### **The North Lincolnshire Green Energy Park**

The North Lincolnshire Green Energy Park is an innovative proposal utilising a combination of technologies, to ensure that as much energy as possible is recovered from waste that cannot be recycled.

At its core will sit an Energy Recovery Facility, generating up to 95-megawatts of electricity from 380-megawatts of thermal energy. To ensure the greatest possible efficiency, this will sit alongside 10-megawatts of hydrogen storage, 30-megawatts of battery storage, 120 tonnes of steam storage, and an ash treatment facility. The Energy Recovery Facility and associated energy developments are the focus of this consultation.

The Energy Recovery Facility will make a major contribution to waste management across the region, using up to 650,000 tonnes of residual waste, that might otherwise go to landfill or export every year. In doing so it will generate enough energy to meet the needs of up to 193,000 homes. It could also provide power, heat and cooling to the proposed new hospital in Scunthorpe.

Further details of the proposed North Lincolnshire Green Energy Park will be included in materials published as part of the consultation. Details of the materials that we will published are set out in the 'Consulting the community' section below.

### **The planning process**

We are developing the proposed North Lincolnshire Green Energy Park under the Planning Act 2008. This is because its proposed generating capacity exceeds 50-megawatts, which means that it is classified as a Nationally Significant Infrastructure Project (NSIP) requiring a Development Consent Order (DCO).

Unlike planning applications, which are considered by local authorities, DCO applications are made to the Planning Inspectorate (PINS). This independent body administers the application process on behalf of the relevant Secretary of State – who makes the final decision on the application.

For the proposed North Lincolnshire Green Energy Park, the decision will be made by the Secretary of State for Business, Energy & Industrial Strategy (BEIS).

PINS has produced a guide to the application process for members of the public. This is available at its website:  
<https://infrastructure.planninginspectorate.gov.uk/wp-content/uploads/2013/04/Advice-note-8.0.pdf>

Figure 2 shows each stage of the planning process for NSIPs.

### **The Planning Act 2008 and consultation**

DCOs are governed by a fixed, statutory process which requires us to:

- consult with persons with an interest in the proposed land and certain bodies as prescribed under section 42 of the Planning Act 2008.
- consult the local community under section 47 of the Planning Act 2008.
- publicise the proposals locally and nationally under section 48 of the Planning Act 2008.

It also provides a fixed role for local authorities and means we are following a well-established and clear process to develop our proposals.

We are ready to meet the requirement for consultation by holding what is known as statutory consultation. We will use the feedback that we receive during the statutory consultation to help us develop our final proposals for the North Lincolnshire Green Energy Park, before submitting our DCO application. We are publishing this document before the statutory consultation to help local people understand how they can find out more and share their views.

As part of our DCO application, we will submit a Consultation Report detailing our approach to consultation, the feedback that we received during the statutory consultation, and how we have had regard to it. When considering our DCO application, the Secretary of State will consider whether the consultation that we have undertaken has been adequate.

### **Environmental impact assessment**

We are also carrying an Environmental Impact Assessment (EIA) of our proposals. This involves assessing potential environmental impacts from our

proposals and, where appropriate, propose mitigation, in line with Infrastructure Planning (Environmental Impact Assessment) Regulations 2017.

We have already sought advice from PINS and stakeholders on how we should assess potential environmental impacts from the proposed North Lincolnshire Green Energy Park. PINS has set out the results of this process in a document called a Scoping Opinion. This is available online:

<https://infrastructure.planninginspectorate.gov.uk/wp-content/ipc/uploads/projects/EN010116/EN010116-000013-NLGEP%20-%20Scoping%20Opinion.pdf>

As part of the statutory consultation, we will share the next stage of our EIA work. This is report of the preliminary findings of our EIA and our initial proposals for mitigation, known as a Preliminary Environmental Information Report (PEIR).

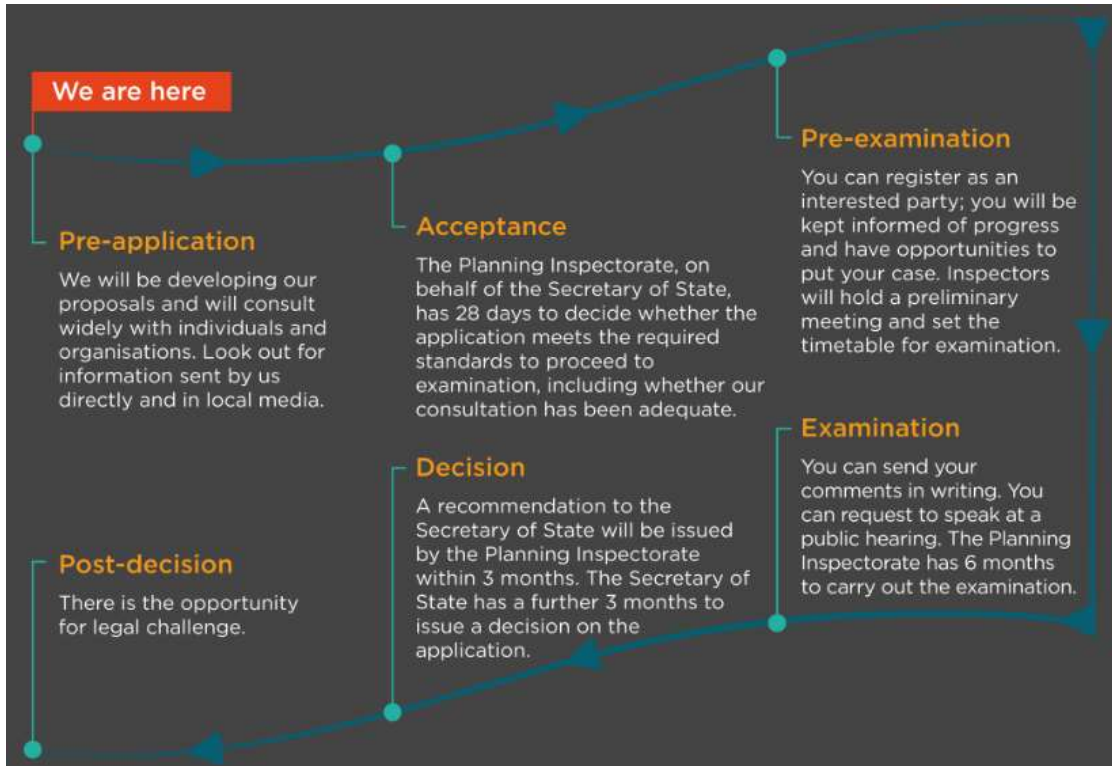
Following the consultation, we will finalise our assessments and report on them in a document called an Environmental Statement (ES). This will form part of our DCO application.

### **More information**

You can find more information about the Planning Act 2008, PINS and their role and how to participate in the DCO process on the PINS National Infrastructure Planning website -

<https://infrastructure.planninginspectorate.gov.uk/>, or by calling PINS on 0303 444 5000.





**Figure 2: The planning process for NSIPs**

## Consulting the community

We are inviting the community living in the vicinity of the proposed North Lincolnshire Green Energy Park to take part in the statutory consultation and provide feedback on our developed proposals. Through consultation, we want to:

- ensure that those potentially affected by our proposals have the opportunity to understand them and provide their views.
- gain useful feedback on the proposed North Lincolnshire Green Energy Park which will help improve our design and EIA process.
- comply with the requirements set by the Planning Act 2008 for projects of this type.

In this period of statutory public consultation, we will make available further information about the proposed North Lincolnshire Green Energy Park including details of our advanced design proposals. This will be an opportunity for members of the community to further influence our design.

## Consulting during the COVID 19 pandemic

We are consulting at a time when the ongoing COVID 19 pandemic means there are restrictions on holding public meetings and events. While the Government has now announced a roadmap for ending the current



restrictions, the dates in this are not fixed. The timing of the end of restrictions will depend on four tests set by the Government in its *COVID-19 Response: Spring 2021*.

We are aware of how important it is to make sure that anyone in the community who wants to find out more or share their views on the proposals can do so, as well as to provide certainty about how we will consult. We have developed a consultation programme designed to allow people from across the community to respond which is also compatible with different levels of social distancing requirements. As such, this document sets out a variety of different ways for local people to find out more information and provide feedback.

In preparing our approach to consultation, we have considered Government guidance on COVID 19: [www.gov.uk/coronavirus](http://www.gov.uk/coronavirus). We have also considered advice from the local authority where the proposed North Lincolnshire Green Energy Park is located, the results of non-statutory consultation, and best practice guidance such as the National Infrastructure Planning Association's paper *Development Consent Orders and the Coronavirus Pandemic* (21 April 2020).

It is possible that the Government's advice regarding the COVID 19 pandemic may change during the consultation on our proposals or between the publication of this document and the beginning of the consultation. Therefore, we have set out below the different approaches that we propose to take if the Government's COVID 19 alert level changes.

### **Developing our approach to consultation**

We have undertaken early engagement with stakeholders to develop our approach to community consultation.

This has included meeting with officers and members at North Lincolnshire Council, the local authority for the area where the proposed North Lincolnshire Green Energy Park is located, relevant statutory advisers, potentially affected land interests, parish councils, and relevant members of Parliament. We also conducted a period of non-statutory consultation between 26 May 2020 and 14 July 2020.

We conducted the non-statutory consultation remotely due to the COVID 19 pandemic. This involved sending consultation booklets and questionnaires to people living locally, launching a website with information about the proposed North Lincolnshire Green Energy Park, holding online information events and speaking to residents individually through telephone surgeries.

Through the non-statutory consultation, we invited feedback on our early proposals for the North Lincolnshire Green Energy Park, our approach to EIA, and our approach to consultation.

We are required to consult with host authorities as defined by section 43(1) of the Planning Act 2008 on the development of this SoCC. We consulted these authorities between 2 March 2021 and 30 March 2021. Table 1 below summarises feedback from this consultation and our responses to it.

**Table 1: feedback from SoCC consultation**

Feedback	Our response

**What will we consult on?**

During the statutory consultation, we will be asking for views on:

- The proposed North Lincolnshire Green Energy Park
- The short term and long term impacts of the proposed North Lincolnshire Green Energy Park including:
  - Construction impacts
  - Environmental impacts
  - Operational impacts
  - Impacts from decommissioning
- The Preliminary Environmental Information Report

**Who will we consult?**

We will consult widely in accordance with this SoCC and encourage participation in the consultation from any person or group who is interested in the proposed North Lincolnshire Green Energy Park. Please see Table 2 below for the geographic areas within which we will consult.

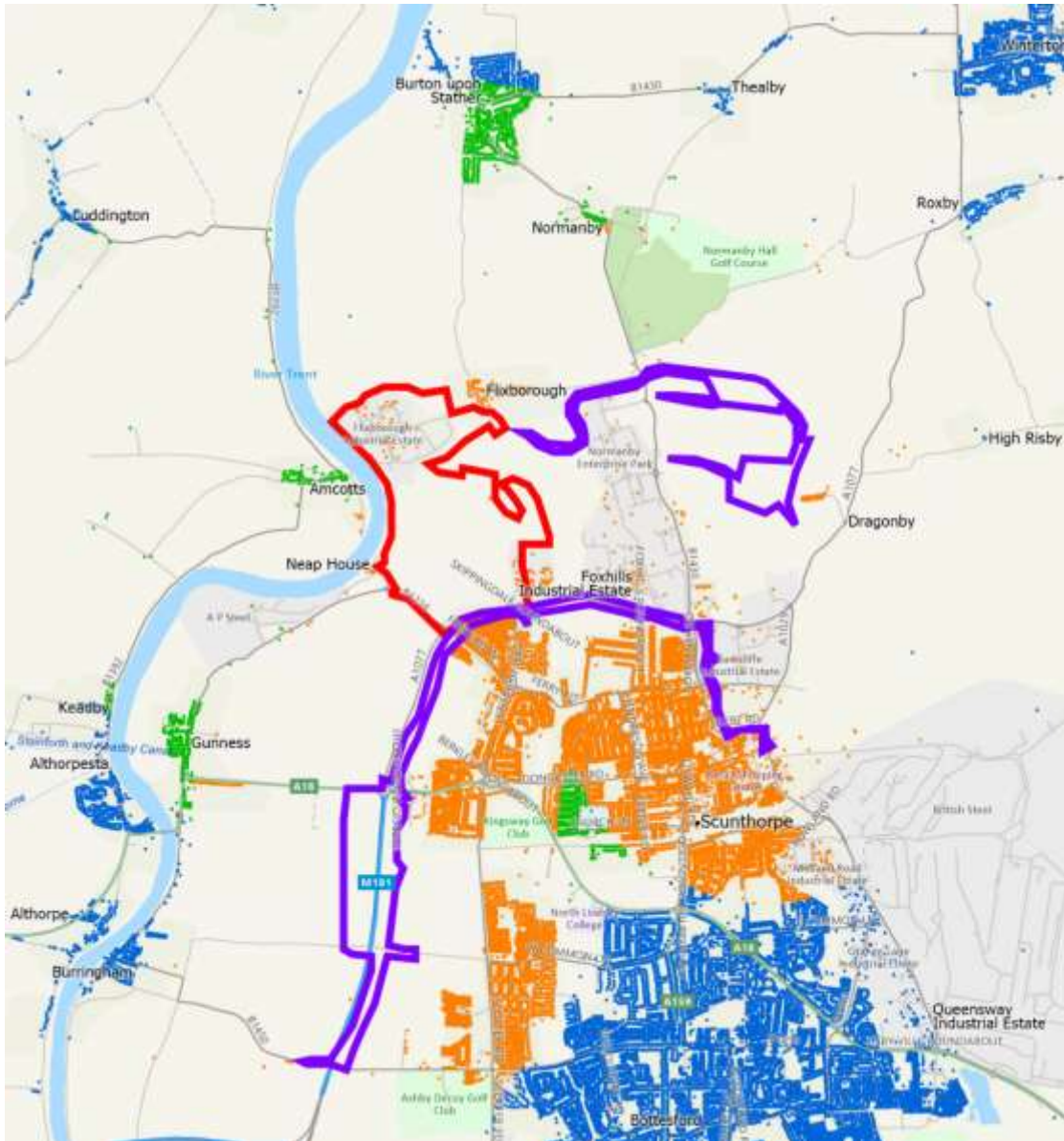
We have defined a series of ‘zones of consultation’ for the purpose of publicising the consultation directly to the local community for the purposes of Section 47 of the Planning Act 2008. This recognises that that levels of potential impact and interest are likely to vary with geography. We will use different consultation techniques within each zone.

These zones are set out in Table 2 below alongside maps of the zones of consultation.

**Table 2: Zones of consultation**

Zone	Parameters
Zone 1	People living and working in the immediate vicinity of the proposed North Lincolnshire Green Energy Park, as well as their political representatives (at a parish, district, county and Parliamentary level) as defined in Figure 3 below. This is defined as a radius of 3km

	from the site of the proposed North Lincolnshire Green Energy Park as well as a 0.5km buffer around the proposed district heating and power network and railway line serving the site.
Zone 2	People who may be interested in the wider potential impacts of the proposed North Lincolnshire Green Energy Park, such as transport, visual impact and creating new jobs. The zone is based on a 10km radius around the site, which draws on the Zone of Theoretical Visibility for the project – a tool we use to assess potential visual impacts.
Zone 3	People living and working in the host local authority of North Lincolnshire Council outside of consultation zone 1.



**Figure 3: Addresses within consultation zone 1. Addresses within 3km of the site of the proposed North Lincolnshire Green Energy Park are shown in green. Addresses in the 1.5km buffer from the railway line and proposed district heating and power network are shown in orange.**

### How will we consult?

We will use a range of techniques to consult the community, which will be guided by the zones of consultation. These are designed to allow people with different needs across the community to take part in the consultation in a way that is convenient to them while complying with Government guidance on COVID 19. These are set out in Table 3 below.

**Table 3: Consultation publicity and techniques**

<b>How we will publicise the consultation</b>	<b>Zone 1</b>	<b>Zone 2</b>	<b>Zone 3</b>
Writing to all addresses within the zone	X		
Writing to elected representatives, parish councils and community groups within the zone with details of the consultation	X	X	
Sharing a poster with consultation details with parish councils and community groups within the zone	X	X	
Writing to the Leader and Chief Executive of local authorities within the zone	X	X	X
Publicising the consultation in the Scunthorpe Telegraph	X	X	X
Publicising the consultation via regional and local broadcasters including BBC Radio Lincolnshire	X	X	X
Advertising the consultation online	X	X	X
Publicising the consultation in the Lincolnshire Echo, Yorkshire Post, Hull Daily Mail			X
<b>How we will consult</b>			
Sending a copy of the consultation booklet with a consultation questionnaire and a pre-addressed Freepost envelope	X		
Inviting residents to take part in telephone surgeries	X	X	
Contacting community and voluntary organisations within the zone to offer direct engagement	X	X	
Sharing a consultation information pack designed to support stakeholders promoting consultation through their own existing communication channels such as social media feeds with local authorities, parish councils and community groups within the zone	X	X	
Publication of consultation information online at [REDACTED]	X	X	X

Inviting elected representatives to take part in briefings through a digital meeting	X	X	X
Hosting webinars which will include a presentation regarding the proposals and an opportunity to ask questions	X	X	X
Hosting a virtual exhibition on the consultation website	X	X	X
Inviting enquiries and responses online through the consultation website, by freephone, freepost or email	X	X	X

### Changes to consultation arrangements

These consultation techniques have been developed to comply with the current COVID 19 alert level set by the Government. At the time of publication, this is Level 5 – the highest alert level.

We recognise that, should social distancing restrictions be lifted in line with the earliest timetable that was set out by the Government on 22 February 2021, it is likely that the alert level will change during the consultation period. However, it is also important to provide certainty to consultees about how they will be consulted.

If the alert level is changed to Level 1 or 2, which would mean the Government considers the threat posed by COVID 19 to have reduced, we will consider holding in-person engagement at physical locations on a voluntary basis. We would also consider placing information on public deposit at physical locations subject to the availability of deposit locations in the vicinity of the scheme. The Government has confirmed that placing materials online meets the requirement to place information on public deposit in the *Infrastructure Planning (Publication and Notification of Applications etc.) (Coronavirus) (Amendment) Regulations 2020 (the 2020 Regulations)*.

The holding of in-person engagement and the placing of information at public deposit locations would require time to organise and to get the right agreements, therefore we would assess on DATE TO BE CONFIRMED whether it will be possible to undertake these activities. If the alert level remained as 3 or higher on this date, we would not consider it possible to deliver this additional voluntary activity within the consultation period.

We will publicise changes in consultation arrangements due to COVID 19 by:

- Writing to all addresses and elected representatives within consultation zone 1
- Writing to all elected members at North Lincolnshire Council
- Writing to all parish councils within consultation zone 2



- Publicising the change of arrangements in the Scunthorpe Telegraph, Lincolnshire Echo, Yorkshire Post, Hull Daily Mail, which cover zones 1, 2 and 3
- Publicising the change of arrangements online

Depending on the outcome of the consultation, we may conduct further, targeted, consultation on a voluntary basis.

### Consultation information

We will produce a range of materials providing information as part of the consultation:

- A consultation booklet providing a non-technical overview of the proposed North Lincolnshire Green Energy Park, the EIA process, the consultation and planning process, and proposed next steps
- A virtual exhibition setting out information about the proposals and how to take part in the consultation
- Presentations to be given as part of webinars
- The PEIR, accompanied by a non-technical summary
- A consultation questionnaire designed to collect responses to the consultation

Copies of consultation information will be made available for review free of charge online at [REDACTED] and, should it become possible as outlined above, at public deposit points. Hard copies of documents will also be made available on request.

### Collection of responses

To capture participants' feedback, we will produce a consultation questionnaire inviting comments on the different elements of the proposed North Lincolnshire Green Energy Park. The questionnaire will be made available by direct mail to people living in consultation zone 1, online through the proposed North Lincolnshire Green Energy Park website, [REDACTED] and on request.

Consultees will be able to respond by completing a questionnaire online or returning a completed questionnaire using the contact details set out in this document during the consultation period. Pre-addressed Freepost envelopes will be made available on request using the contact details set out on page 17.



## Seldom heard audiences

It is important to ensure that consultation is inclusive and enables participation from a wide range of audiences, including those who are seldom heard in public consultation such as young people, people who are shielding during the COVID 19 pandemic and those for whom English is not a first language. We will do this by:

- Holding webinars at a variety of times, including evenings and weekends, to enable participation by people with different time commitments and making recordings of webinars available afterwards.
- Making provision for people who do not have access to the internet through the consultation programme. This will include sending a copy of the consultation booklet and consultation questionnaire to every address in consultation zone 1, offering one-to-one telephone appointments to people living in consultation zone 1 and making hard copies of consultation materials available on request.
- Choosing accessible venues for public information points if these are to be utilised.
- Producing our consultation materials in accessible formats, including checking accessibility of online materials.
- Contacting community and voluntary organisations including parish councils and schools within consultation zone 1 to offer direct engagement and sharing a consultation information pack designed to support them in promoting consultation through their own existing communication channels such as social media feeds.
- Providing a variety of communications channels including a Freephone number, email address and Freepost address for those seeking information.

## Consultation arrangements

### How to take part in the consultation

The statutory public consultation on the proposed North Lincolnshire Green Energy Park will take place between DATES TBC.

Consultees can find out more by:

- Contacting us on 0800 130 3353 or [REDACTED]
- Viewing a series of webinars we will give about the proposals online. These will offer the opportunity to ask questions about the proposals. These will include the following webinars:
  - INSERT ONCE DATES CONFIRMED
- We will publish details of any additional webinars at [REDACTED].
- Viewing a virtual public exhibition on our website, [REDACTED] which will be available to view at any time from the start of consultation on DATE TBC to the close of consultation on DATE TBC.
- Booking an appointment to speak with members of the project team about our proposals individually. You can book an appointment using the contact details provided below. When booking appointments, we will ask for specific areas of interest to match the caller with a specialist member of the project team for their appointment.
- Reading a booklet summarising our proposals. We will send a copy of the booklet to all addresses in consultation zone 1. The booklet will also be available from our website, [REDACTED] and on request.
- Reviewing the PEIR and other consultation documents by going to our website, [REDACTED]. Hard copies of consultation documents will also be available on request. A charge of £0.35 per page will be applicable for hard copies of the PEIR and its non-technical summary.

### Responding to the consultation

We welcome feedback on our proposals for the North Lincolnshire Green Energy Park. Anyone can share their views by:

- Completing a consultation questionnaire online at [REDACTED]
- Returning a questionnaire to North Lincolnshire Green Energy Park Consultation, FREEPOST reference RTRB-LUJJ-AGBY, c/o [REDACTED]

- Submitting their comments by email to [REDACTED] or in writing to the above Freepost address.

Responses must be received by the consultation deadline of 23:59 on DATE TBC

### How we will consider the responses

Following the statutory consultation, we will consider all the views that we receive and continue to develop our design for the proposed North Lincolnshire Green Energy Park ahead of submitting our DCO application to the Secretary of State. Our DCO application will include a Consultation Report setting out how we have had regard to all responses received.

Any comments received will be analysed by North Lincolnshire Green Energy Park Ltd and any of its appointed agents. Copies may be made available in due course to the Secretary of State, the Planning Inspectorate and other relevant statutory authorities so that feedback can be considered as part of the DCO process. We will request that any personal details are not placed on public record and will be held securely by North Lincolnshire Green Energy Park Ltd and its agents in accordance with the data protection law and will be used solely in connection with the consultation process and subsequent DCO application and, except as noted above, will not be passed to third parties.

The Planning Inspectorate has also published details of how it manages comments received in a Privacy Notice available on its website:

[https://assets.publishing.service.gov.uk/government/uploads/system/uploads/attachment\\_data/file/879604/Privacy\\_Note\\_Final\\_15042020.pdf](https://assets.publishing.service.gov.uk/government/uploads/system/uploads/attachment_data/file/879604/Privacy_Note_Final_15042020.pdf)

### Further information

For further information, please contact us by:

- Visiting the proposed North Lincolnshire Green Energy Park website: [REDACTED]
- Calling 0800 130 3353 (9:00am to 5:00pm, Monday to Friday)
- Emailing [REDACTED]
- Writing to North Lincolnshire Green Energy Park Consultation, FREEPOST reference RTRB-LUJJ-AGBY, c/o SECNewgate UK, Sky Light City Tower, 50 Basinghall Street, London, EC2V 5DE

## C-2.2 Covering email

RE: NLGEP - draft SoCC

[Redacted]

Subject: RE: NLGEP - draft SoCC

Good evening,

We are now in a position to consult the Council formally on the draft SoCC. Please find an updated draft attached for the purposes of consultation.

The main changes to this from the copy we shared with you informally are to the text on pages 8 and 13 to address the Government's roadmap on COVID 19 and to add a plan showing consultation zone 1.

You will note we have now included consultation dates in the draft SoCC – this is to avoid the risk of needing to consult again on the SoCC if the programme for consultation changes. We are currently planning to consult from 13 May and 24 June 2021.

We are required to provide the Council with 28 days to provide any comments on the draft SoCC. We would therefore be grateful for any comments by the end of the day on 30 March 2021.

Please do let us know if you have any questions about the document attached in the meantime.

Best regards,

Douglas

[Redacted]